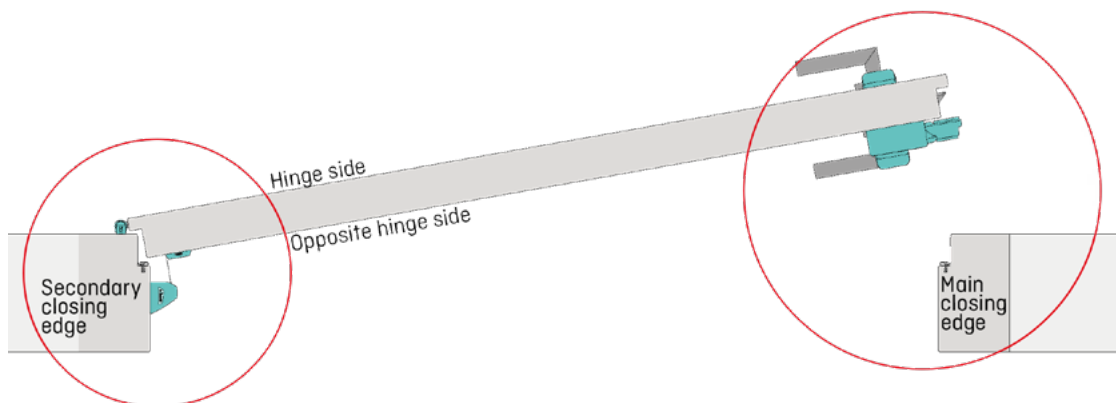


Finger protection systems

Securing all danger points on doors

Applied and tested for years - thanks to their quality and durability athmer finger protection roller blinds were the first products on the market to **effectively secure** the gap on the opposite hinge side of doors against fingers being trapped. Since then, planners and fabricators have deliberately opted for athmer finger protection because they **ensure safety** not only in kindergartens, schools, hospitals and care facilities. In addition, the roller blinds offer superior protection against residual risks on **automatic doors**.

These solutions are available for timber, metal and glass doors and provide both visual and physical barriers to the gaps around a door. We offer **options** for both the hinge and opposite hinge side as well as at the head with our Porti® range of door opening restrictors. The main closing edge can be secured with our door stop HS-25.



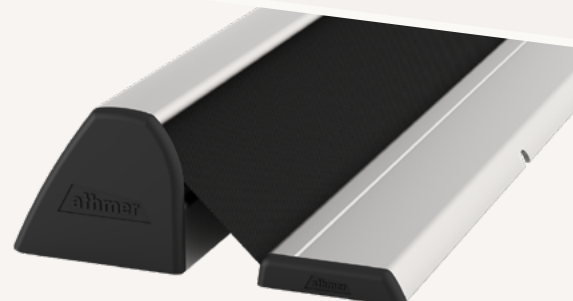
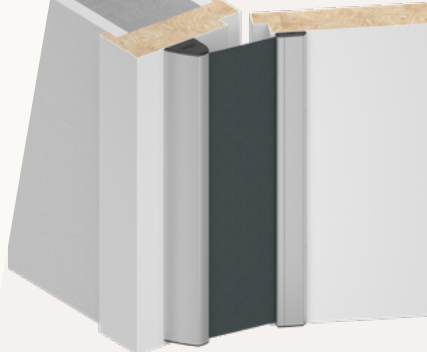


Finger protection systems

NR-32 UniSafe®

5-901

- / easy to install and dismantle
- / one design for all applications
- / click system with concealed screws
- / roller blind automatically maintains constant tension
- / flexible choice of colours



APPLICATION

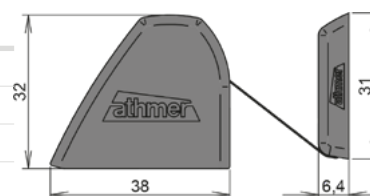
Danger point	secondary closing edge, opposite hinge side
Door type	PVC profile door, flush door, rebated door, flush profile door, multifunction door
Door leaf material	timber, aluminium, PVC, steel
Door frame material	timber, aluminium, PVC, steel
Suitable for fire protection	yes
Doors with panic hardware/ ram protection bracket	yes

TECHNICAL DATA

Material profile	aluminium
Surface colors (color profile)	aluminium anodized or color coated, flexible color design possible
Standard colors	C-0, C-31, RAL9016, RAL7016 (special colors optional)
Material cover	synthetic fiber
Color cover	black, white-black, yellow-black, bordeaux-black, blue-black, green-black, black XL
Delivery length	325 mm - 3000 mm
Delivery length	1925 mm/ 2050 mm
Standard length for power operated doors EN16005	2000, 2500 mm
Special lengths available	yes
Protective cap end	yes

FIXING

Retrofittable	yes
Mounting	clicked
Diassembly	unlock
Fixing	invisibly screwed
Accessories	ram protection



COLORS

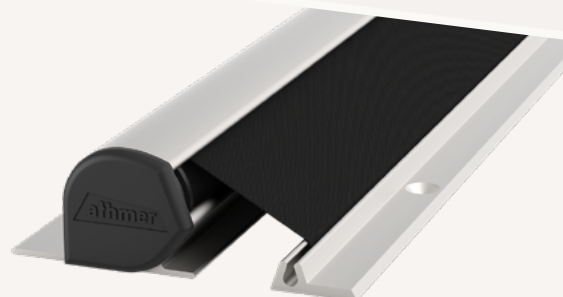
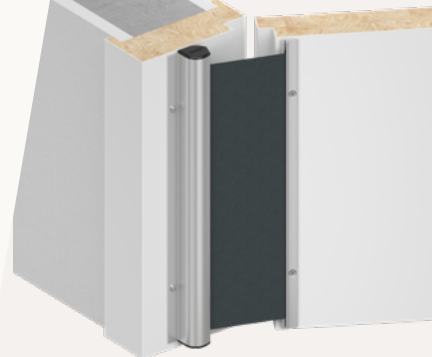
ART.NO.

C-31	5-985
RAL 9016	5-909
RAL 7016	5-904
Special colors	5-999

NR-25

5-101

- / proven protective system for decades
- / compact form
- / optional version for fitting to glass doors
- / roller blind automatically maintains constant tension



APPLICATION

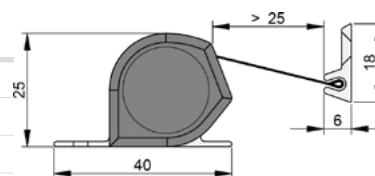
Danger point	secondary closing edge, opposite hinge side
Door type	PVC profile door, flush door, rebated door, flush profile door, multifunction door
Door leaf material	timber, aluminium, PVC, steel
Door frame material	timber, aluminium, PVC, steel
Suitable for fire protection	yes
Doors with panic hardware/ ram protection bracket	yes

TECHNICAL DATA

Material profile	aluminium
Surface colors (color profile)	aluminium anodized or color coated, flexible color design possible
Standard colors	C-0, C-31, RAL9016, RAL7016 (special colors optional)
Material cover	synthetic fiber
Color cover	black
Delivery length	325 mm - 2500 mm
Delivery length	1925/ 2050 mm
Standard length for power operated doors EN16005	2015 mm
Special lengths available	yes

FIXING

Retrofittable	yes
Mounting	screwed
Diassembly	screwed
Fixing	visibly screwed



COLORS

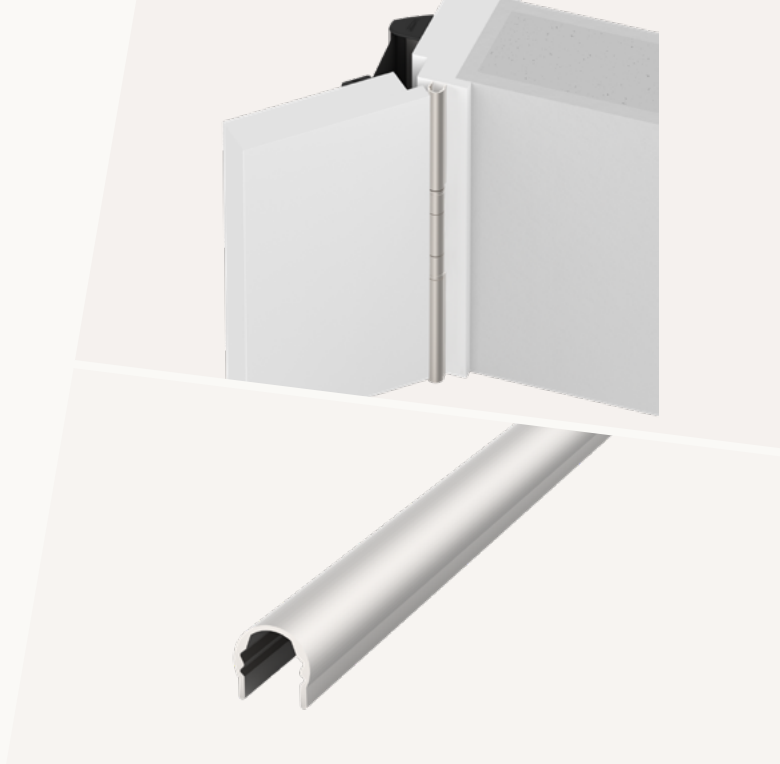
ART.NO.

C-31	5-185
RAL 9016	5-109
RAL 7016	5-104
Special colors	5-499

BU-16K⁺

5-310

- / easy installation without markings or installation aids
- / adjustable 2D fixing element
- / invisible screws
- / for timber and metal frames



APPLICATION

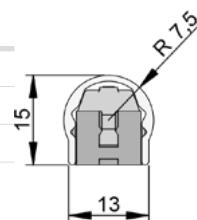
Danger point	secondary closing edge, hinge side
Door leaf material	timber, aluminium, PVC, steel
Door frame material	timber, aluminium, PVC, steel
Suitable for fire protection	yes
Cleaning	washable
Outdoor	weatherproof

TECHNICAL DATA

Material profile	aluminium
Surface colors (color profile)	aluminium anodized or color coated, flexible color design possible
Standard colors	C-0, C-31, RAL9016 (special colors optional)
Delivery length	90 mm - 3000 mm
Special lengths available	yes
Standard length self cutting	1755, 1980 mm available as set (suitable for mounting below, between and above the hinges)
For hinge diameter	15 - 16 mm

FIXING

Retrofittable	yes
Diassembly	lever off
Fixing	invisibly screwed



COLORS

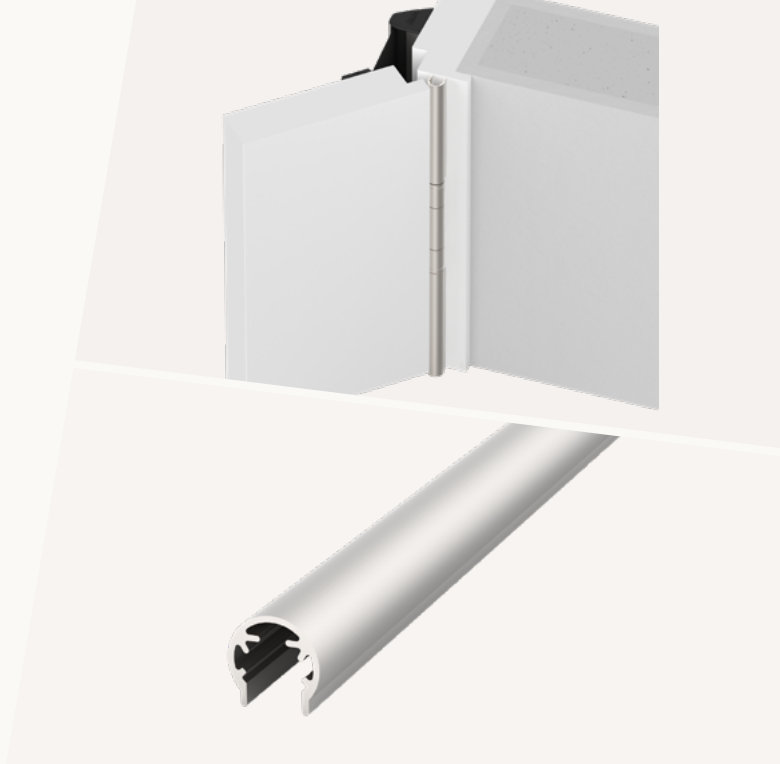
ART.NO.

C-31	5-312
RAL 9016	5-311
Special colors	5-313

BU-18K⁺

5-320

- / easy installation without markings or installation aids
- / adjustable 2D fixing element
- / invisible screws
- / for timber and metal frames



APPLICATION

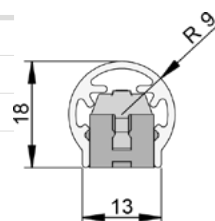
Danger point	secondary closing edge, hinge side
Door leaf material	timber, aluminium, PVC, steel
Door frame material	timber, aluminium, PVC, steel
Suitable for fire protection	yes
Cleaning	washable
Outdoor	weatherproof

TECHNICAL DATA

Material profile	aluminium
Surface colors (color profile)	aluminum anodized or color coated, flexible color design possible
Standard colors	C-0, C-31, RAL9016 (special colors optional)
Delivery length	90 mm - 3000 mm
Special lengths available	yes
Standard length self cutting	1755, 1980 mm available as set (suitable for mounting below, between and above the hinges)
For hinge diameter	17 - 18 mm

FIXING

Retrofittable	yes
Diassembly	lever off
Fixing	invisibly screwed



COLORS

ART.NO.

C-31	5-322
RAL 9016	5-321
Special colors	5-321

BU-20K⁺

5-330

- / easy installation without markings or installation aids
- / adjustable 2D fixing element
- / invisible screws
- / for timber and metal frames



APPLICATION

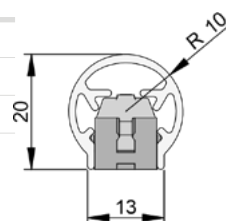
Danger point	secondary closing edge, hinge side
Door leaf material	timber, aluminium, PVC, steel
Door frame material	timber, aluminium, PVC, steel
Suitable for fire protection	yes
Cleaning	washable
Outdoor	weatherproof

TECHNICAL DATA

Material profile	aluminium
Surface colors (color profile)	aluminum anodized or color coated, flexible color design possible
Standard colors	C-0, C-31, RAL9016 (special colors optional)
Delivery length	90 mm - 3000 mm
Special lengths available	yes
Standard length self cutting	1755, 1980 mm available as set (suitable for mounting below, between and above the hinges)
For hinge diameter	19 - 20 mm

FIXING

Retrofittable	yes
Mounting	invisibly screwed
Diassembly	lever off



COLORS

ART.NO.

C-31	5-332
RAL 9016	5-331
Special colors	5-331

BU-22K+

5-340

- / easy installation without markings or installation aids
- / adjustable 2D fixing element
- / invisible screws
- / for timber and metal frames



APPLICATION

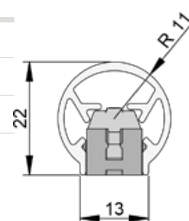
Danger point	secondary closing edge, hinge side
Door leaf material	timber, aluminium, PVC, steel
Door frame material	timber, aluminium, PVC, steel
Suitable for fire protection	yes
Cleaning	washable
Outdoor	weatherproof

TECHNICAL DATA

Material profile	aluminium
Surface colors (color profile)	aluminum anodized or color coated, flexible color design possible
Standard colors	C-0, C-31, RAL9016 (special colors optional)
Delivery length	90 mm - 3000 mm
Special lengths available	yes
Standard length self cutting	1755, 1980 mm available as set (suitable for mounting below, between and above the hinges)
For hinge diameter	21 - 22 mm

FIXING

Retrofittable	yes
Mounting	invisibly screwed
Diassembly	lever off



COLORS

ART.NO.

C-31	5-343
RAL 9016	5-341
Special colors	5-344

BU-24K⁺

5-350

- / easy installation without markings or installation aids
- / adjustable 2D fixing element
- / invisible screws
- / for timber and metal frames



APPLICATION

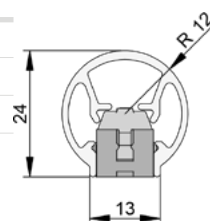
Danger point	secondary closing edge, hinge side
Door leaf material	timber, aluminium, PVC, steel
Door frame material	timber, aluminium, PVC, steel
Suitable for fire protection	yes
Cleaning	washable
Outdoor	weatherproof

TECHNICAL DATA

Material profile	aluminium
Surface colors (color profile)	aluminium anodized or color coated, flexible color design possible
Standard colors	C-0, C-31, RAL9016 (special colors optional)
Delivery length	90 mm - 3000 mm
Special lengths available	yes
Standard length self cutting	1755, 1980 mm available as set (suitable for mounting below, between and above the hinges)
For hinge diameter	23 - 24 mm

FIXING

Retrofittable	yes
Mounting	invisibly screwed
Diassembly	lever off



COLORS

ART.NO.

C-31	5-353
RAL 9016	5-351
Special colors	5-348

B0-13

5-455

- / protective profiles for butt doors with screw-on flap hinges
- / design oriented adapted profile geometry to the hinge
- / for hinge Ø from 12 - 14 mm



APPLICATION

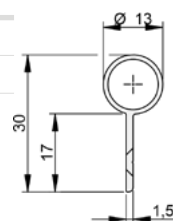
Danger point	secondary closing edge, hinge side opening face
Door type	flush door
Door leaf material	timber
Door frame material	timber, metal
Suitable for fire protection	yes

TECHNICAL DATA

Material profile	aluminium
Surface colors (color profile)	aluminium anodized or color coated, flexible color design possible
Standard colors	C-0, C-31, RAL9016 (special colors optional)
Delivery length	90 mm - 3000 mm
Special lengths available	yes
Standard length self cutting	1750, 1950 mm available as set (suitable for mounting below, between and above the hinges)
For hinge diameter	12-14 mm

FIXING

Retrofittable	yes
Fixing	visibly screwed



COLORS

ART.NO.

C-31	5-458
RAL 9016	5-456
Special colors	5-458

B0-16

5-314

- / protective profiles for butt doors with screw-on flap hinges
- / design oriented adapted profile geometry to the hinges
- / for hinges \varnothing from 12 - 14 mm



APPLICATION

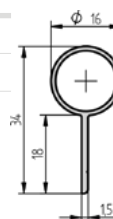
Danger point	secondary closing edge, hinge side
Door type	flush door
Door leaf material	timber
Door frame material	timber, metal
Suitable for fire protection	yes

TECHNICAL DATA

Material profile	aluminium
Surface colors (color profile)	aluminium anodized or color coated, flexible color design possible
Standard colors	C-0, C-31, RAL9016 (special colors optional)
Delivery length	90 mm - 3000 mm
Special lengths available	yes
Standard length self cutting	1750, 1950 mm available as set (suitable for mounting below, between and above the hinges)
For hinge diameter	15 - 16 mm

FIXING

Retrofittable	yes
Fixing	visibly screwed
Accessories	endcap optional



COLORS

ART.NO.

C-31	5-318
RAL 9016	5-315
Special colors	5-317

B0-23

5-231

- / for doors without rebate with screw-on flap hinges
- / for timber and metal frames



APPLICATION

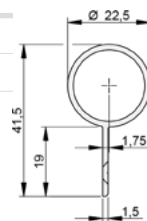
Danger point	secondary closing edge, hinge side
Door type	flush door
Door leaf material	timber
Door frame material	timber, metal
Suitable for fire protection	yes

TECHNICAL DATA

Material profile	aluminium
Surface colors (color profile)	aluminium anodized or color coated, flexible color design possible
Standard colors	C-0, C-31, RAL9016 (special colors optional)
Delivery length	90 mm - 3000 mm
Special lengths available	yes
Standard length self cutting	1750, 1950 mm available as set (suitable for mounting below, between and above the hinges)
For hinge diameter	22 - 24 mm

FIXING

Retrofittable	yes
Fixing	visibly screwed
Accessories	end cap optional



COLORS

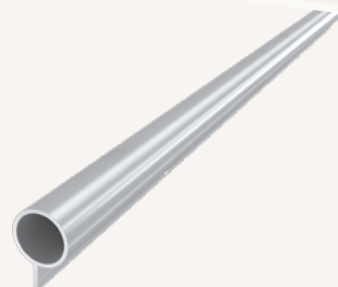
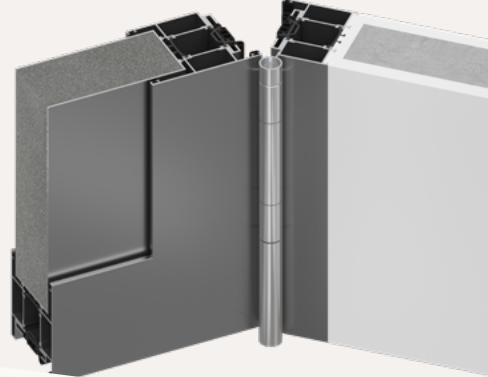
ART.NO.

C-31	5-316
RAL 9016	5-242
Special colors	5-494

B0-20

5-445

/ for doors with flush fit profile doors



APPLICATION

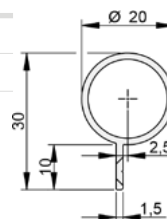
Danger point	secondary closing edge, hinge side
Door leaf material	aluminium
Door frame material	aluminium
Suitable for fire protection	yes
Cleaning	washable
Outdoor	weatherproof

TECHNICAL DATA

Material profile	aluminium
Surface colors (color profile)	aluminium anodized or color coated, flexible color design possible
Standard colors	C-0, C-31, RAL9016 (special colors optional)
Delivery length	90 mm - 3000 mm
Special lengths available	yes
Standard length self cutting	1750, 1950 mm available as set (suitable for mounting below, between and above the hinges)
For hinge diameter	20 mm

FIXING

Retrofittable	yes
Fixing	visibly screwed
Accessories	end cap optional



COLORS

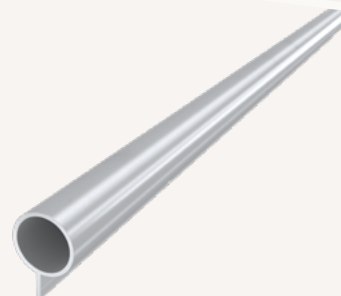
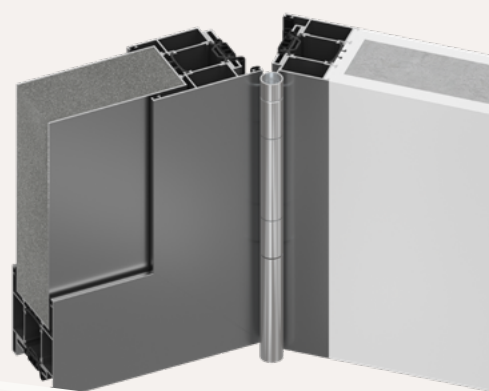
ART.NO.

C-31	5-446
RAL 9016	5-447
Special colors	5-493

B0-22

5-452

/ for doors with flush fit profile doors



APPLICATION

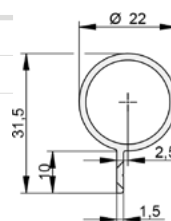
Danger point	secondary closing edge, hinge side
Door leaf material	aluminium
Door frame material	aluminium
Suitable for fire protection	yes
Cleaning	washable
Outdoor	weatherproof

TECHNICAL DATA

Material profile	aluminium
Surface colors (color profile)	aluminium anodized or color coated, flexible color design possible
Standard colors	C-0, C-31, RAL9016 (special colors optional)
Delivery length	90 mm - 3000 mm
Special lengths available	yes
Standard length self cutting	1750, 1950 mm available as set (suitable for mounting below, between and above the hinges)
For hinge diameter	22-23 mm

FIXING

Retrofittable	yes
Fixing	visibly screwed
Accessories	end cap optional



COLORS

ART.NO.

C-31	5-453
RAL 9016	5-454
Special colors	5-469

BD-18

5-449

- / protective profiles for butt doors with hinges for adjustable receiving elements
- / design oriented adapted profile geometry to the hinge
- / standard notch for bottom seal for time savings during installation
- / end caps prevent butt edges



APPLICATION

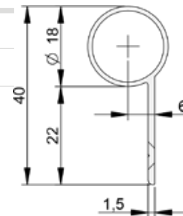
Danger point	secondary closing edge, hinge side
Door leaf material	timber
Door frame material	timber, metal
Suitable for fire protection	yes
Cleaning	washable
Outdoor	weatherproof

TECHNICAL DATA

Material profile	aluminium
Surface colors (color profile)	aluminium anodized or color coated, flexible color design possible
Standard colors	C-0, C-31, RAL9016 (special colors optional)
Delivery length	90 mm - 3000 mm
Special lengths available	yes
Standard length self cutting	1750, 1950 mm available as set (suitable for mounting below, between and above the hinges)
For hinge diameter	17 - 19 mm

FIXING

Retrofittable	yes
Fixing	visibly screwed
Accessories	end cap optional



COLORS	ART.NO.
C-31	5-450
RAL 9016	5-451
Special colors	5-459

BD-20

5-261

- / protective profiles for butt doors with hinges for adjustable receiving elements
- / design oriented adapted profile geometry to the hinge
- / standard notch for bottom seal for time savings during installation
- / end caps prevent butt edges



APPLICATION

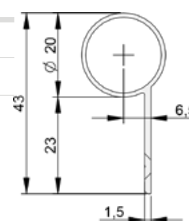
Danger point	secondary closing edge, hinge side
Door leaf material	timber
Door frame material	timber, metal
Suitable for fire protection	yes
Cleaning	washable
Outdoor	weatherproof

TECHNICAL DATA

Material profile	aluminium
Surface colors (color profile)	aluminium anodized or color coated, flexible color design possible
Standard colors	C-0, C-31, RAL9016 (special colors optional)
Delivery length	90 mm - 3000 mm
Special lengths available	yes
Standard length self cutting	1750, 1950 mm available as set (suitable for mounting below, between and above the hinges)
For hinge diameter	19 - 21 mm

FIXING

Retrofittable	yes
Fixing	visibly screwed
Accessories	end cap optional



COLORS

ART.NO.

C-31	5-262
RAL 9016	5-263
Special colors	5-269

BD-23

5-250

- / protective profiles for butt doors with hinges for adjustable receiving elements
- / design oriented adapted profile geometry to the hinge
- / standard notch for bottom seal for time savings during installation
- / end caps prevent butt edges



APPLICATION

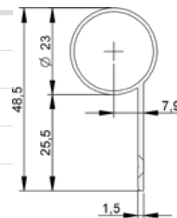
Danger point	secondary closing edge, hinge side
Door leaf material	timber
Door frame material	timber, metal
Suitable for fire protection	yes
Cleaning	washable
Outdoor	weatherproof

TECHNICAL DATA

Material profile	aluminium
Surface colors (color profile)	aluminium anodized or color coated, flexible color design possible
Standard colors	C-0, C-31, RAL9016 (special colors optional)
Delivery length	90 mm - 3000 mm
Special lengths available	yes
Standard length self cutting	1750, 1950 mm available as set (suitable for mounting below, between and above the hinges)
For hinge diameter	22 - 23 mm

FIXING

Retrofittable	yes
Mounting	visibly screwed
Diassembly	screwed
Fixing	visibly screwed
Accessories	end cap optional



COLORS

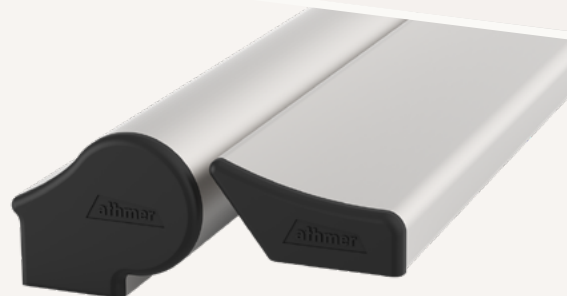
ART.NO.

C-31	5-354
RAL 9016	5-303
Special colors	5-495

BA-28⁺

5-112

- / for surface-mounted hinges on metal doors
- / variable adjustment options
- / concealed screw fixing



APPLICATION

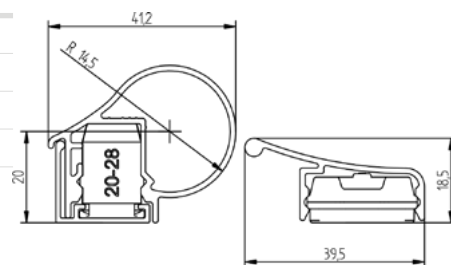
Danger point	secondary closing edge, hinge side
Door leaf material	aluminium
Door frame material	aluminium
Hinge type	top hinge
Suitable for fire protection	yes
Cleaning	washable
Outdoor	weatherproof

TECHNICAL DATA

Material profile	aluminium
Surface colors (color profile)	aluminium anodized or color coated, flexible color design possible
Standard colors	C-0, C-31, RAL9016 (special colors optional)
Delivery length	1900/ 2400 mm
Standard length for power operated doors EN16005	1900 mm
Protective end cap	yes
Standard length self cutting	1900, 2400 available as set (suitable for mounting below, between and above the hinges)
For pivot point distance	22 - 38 mm

FIXING

Retrofittable	yes
Mounting	invisibly screwed
Diassembly	lever off
Fixing	invisibly screwed



COLORS

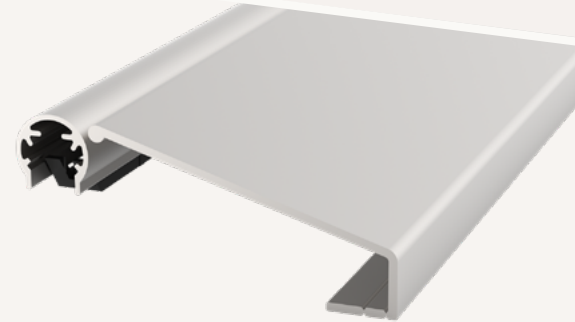
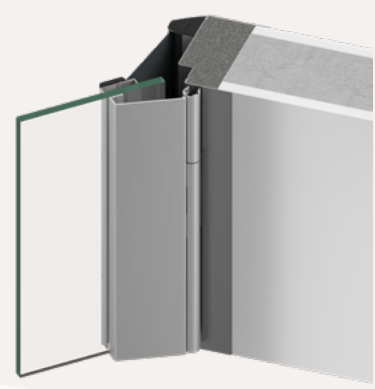
ART.NO.

C-31	5-114
RAL 9016	5-113

BSG1

5-404

- / hinge-side protection system (with BU-K*) for glassdoors
- / architectural, end-to-end solution for standard-compliant protection
- / complete coverage of the belts as well as the counterplates in combination with BU-K*
- / profile with groove for notching for all common all-glass door hinges
- / simple and fast assembly



APPLICATION

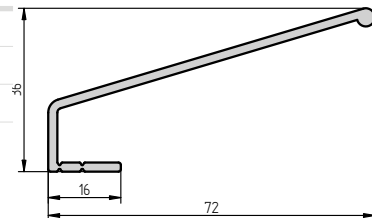
Danger point	secondary closing edge, hinge side
Door leaf material	glass
Door frame material	timber, aluminium, metal
Cleaning	washable

TECHNICAL DATA

Material profile	aluminium
Surface colors (color profile)	aluminium anodized or color coated, flexible color design possible
Standard colors	C-0, C-31, RAL9016 (special colors optional)
Delivery length	90 mm - 3000 mm
Special lengths available	yes
Standard length	1972 mm

FIXING

Retrofittable	yes
Mounting	glued
Fixing	glued



COLORS

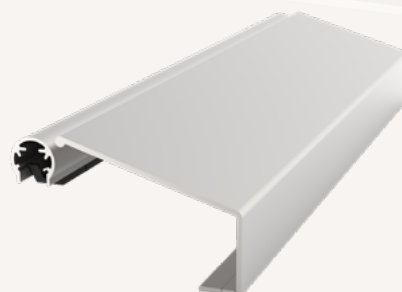
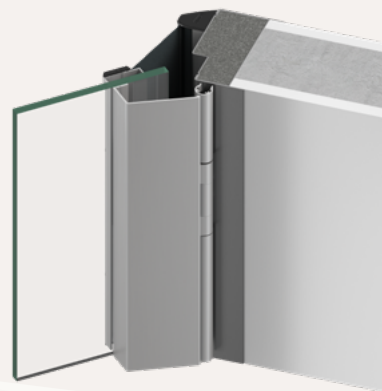
ART.NO.

C-31	5-406
RAL 9016	5-408

BSG 2

5-405

- / hinge-side protection system (with BU-K*) for glassdoors
- / architectural, end-to-end solution for standard-compliant protection
- / complete coverage of the belts as well as the counterplates in combination with BU-K*
- / profile with groove for notching for all common all-glass door hinges
- / simple and fast assembly



APPLICATION

Danger point	secondary closing edge, hinge side
Door leaf material	glass
Door frame material	timber, metal
Cleaning	washable

TECHNICAL DATA

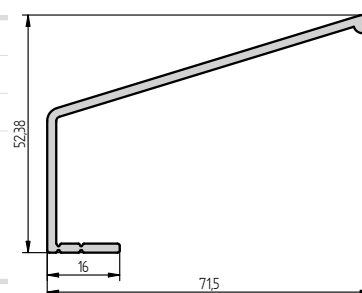
Material profile	aluminium
Surface colors (color profile)	aluminium anodized or color coated, flexible color design possible
Standard colors	C-0, C-31, RAL9016 (special colors optional)
Delivery length	90 mm - 3000 mm
Special lengths available	yes
Standard length	1972 mm

FIXING

Retrofittable	yes
Mounting	glued
Fixing	glued

COLORS

COLORS	ART.NO.
C-31	5-407
RAL 9016	5-409



HS-25

5-1001

- / door stop with active finger protection
- / prevention of trapping and shearing points
- / prevents accidental closing of doors
- / permanent protective function through automatic activation
- / manual unlocking possible for both sides of the door



APPLICATION

Danger point	main closing edge
Door type	flush doors, rebated doors
Free of maintenance	yes
Door leaf material	timber
Door frame material	timber, metal

TECHNICAL DATA

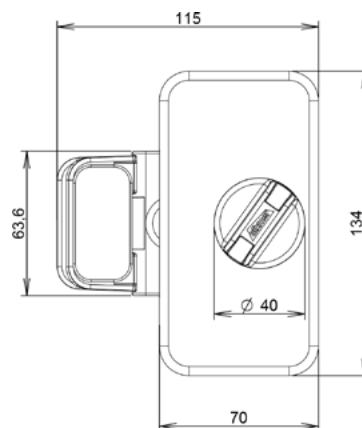
Material profile	stainless steel
Surface colors (color profile)	stainless steel or color coated, flexible color design possible
Standard colors	C-31, RAL9016, RAL7016 (special colors optional)
Max. door leaf thickness	90 mm

FIXING

Retrofittable	yes
Mounting	screwed
Diassembly	screwed
Fixing	invisibly screwed

COLORS

	ART.NO.
C-31	5-1001
RAL 9016	5-1002
RAL 7016	5-1003







Door opening restrictor Porti®

- / protects against the dangers of doors slamming open
- / adaptive damping protects door leaf and frame
- / uniquely space-saving, design-oriented
- / easy to install
- / for retrofitting to metal frames
- / avoid stumbling bocks
- / particularly suitable for hygienically and visually demanding areas
- / ideal for use in hotels, offices and doctors' surgeries
- / for floors with underfloor heating, no need to drill holes for door stops in the floor



Porti® timber doors

Porti® glass doors

	door leaf width 720 - 1 110 mm			door leaf width 610 - 719 mm			door leaf width 709 - 959 mm		
Frame	metal/ timber*	timber	metal	metal/ timber*	timber	metal	timber	metal	
Door leaf weight up to	30 kg	65 kg	65 kg	30 kg	65 kg	65 kg	50 kg	50 kg	
To retrofit	x		x	x		x		x	
Art.No.	5312	5489	5371	5313	5465	5379	5487	5318	

* Suitable
only for
solid
timber
frames

* Suitable
only for
solid
timber
frames